

COUNTRY COLLECTIBLES PRESENTS #47
DISTINCTIVE

FREE CUSTOM DESIGNS
FROM AMERICA'S TOP EXPERTS

KITCHEN

SOLUTIONS

DOUBLE ISSUE

**NEWEST
LOOKS
for 2009**

52

**BRILLIANT
KITCHENS
& BATHS**

**INNOVATIVE
NEW PRODUCTS**
SEE WHAT THEY DO TO A ROOM

\$9.95 DISPLAY UNTIL APRIL 6, 2009 4 7>



74808 01509 2



woody italian mix

NATURAL MATERIALS ARE CHOSEN FOR A EUROPEAN FARMHOUSE LOOK

WISH LIST

- 2½"-thick Carrera marble bar top
- 48" dual-fuel Wolf range and two refrigerators
- Lots of natural light

Designers Sandra and Scott Gjesdahl knew there was a solution for the dark kitchen in this 1960s ranch home. The co-owners of Bristol Design & Construction listened carefully to the homeowners' desire for

an Italian-country look with natural light and an open plan adjacent to the dining and family rooms.

The designers bumped out the dining room to house a 13'-long hutch, added new windows with Douglas fir frames stained to look like cherry and exchanged solid doors for glass ones. To fit the 48" Wolf range and two 24" Liebherr refrigerators, they used an L-shaped plan with an 11'-long island. The shorter wall fits two refrigerators between a same-size pantry and an apothecary cabinet with space for a TV. The longer wall has a farmhouse sink, dishwasher, custom cherry armoire and baking center.

The Italian-country feel came through the choice of materials and colors. An arched opening between the kitchen and dining and family rooms was custom textured in a golden ocher; parts of the rift-cut white oak cabinetry were dyed a light mossy green; granite countertops are a complementary green known as Verde Typhoon; backsplashes are a tumbled mosaic marble called Huntington White; and the armoire's ledge is copper. The island has stacked masonry rocks on one end wall, a white oak hood trimmed with hammered copper and iron nail heads, and a counter of Carrera marble. The floor is rustic cherry, and walls were painted a golden color. At the same time the kitchen remodeling was happening, another floor was added with a master suite.



White oak trimmed with copper and iron nail heads makes a standout hood; Carrera marble countertops and a custom cherry armoire add Italian flair.

ABOVE LEFT: A mix of wood, stone and iron fronts the island, while rustic cherry floorboards run underneath.



DESIGNERS:
Sandra and Scott Gjesdahl
Bristol Design & Construction
12815 N.E. 124th St., Suite C
Kirkland, WA 98034
425-820-1540
bristolddc.com

LOCATION: Kirkland, WA

DIMENSIONS:
12'3" by 21'3"

>>> SPECIAL FEATURES:
Rock wall at end of island with 7"-thick cutting block; Custom cherry armoire that conceals beverage center with drawers for pots and pans; Unique storage with pullout spices on backs of doors and detailed corner units; Separate pastry center

PRODUCTS USED:

- Range: 48" Wolf range
- Refrigerators: Two 24" Liebherr refrigerators
- Dishwasher: Asko
- Microwave: Sharp
- Sinks, faucets: Rohl
- Cabinetry: Custom rift-cut white oak, through Bristol Design & Construction
- Hood: Custom design from Bristol with Vent-a-Hood liner



Photo: Eric Gregory Moore

DESIGNERS:

Sandra and Scott Gjesdahl
Bristol Design & Construction
12815 N.E. 124th St., Suite C
Kirkland, WA 98034
425-820-1540
bristoldc.com

LOCATION:

West Lake Sammamish, WA

DIMENSIONS:

11'6" by 15'6"

>>> SPECIAL FEATURES:

Back-to-back mirrors for vanities; Soffit detailing that differentiates his-and-her vanity areas, adds unusual lighting and provides mounting for mirrors; Recycled resin window crafted from Lumicor

PRODUCTS USED:

- **Cabinetry:** Custom from Bristol Design & Construction, crafted from Sapele wood with Wenge accents
- **Sinks, faucets for sinks and shower:** Kohler
- **Toilet:** Toto
- **Floor:** Tumbled Botticino marble
- **Countertops:** Costa Esmeralda granite
- **Shower wall:** Porcelain tile, Groove Bamboo through Statements, Seattle, WA
- **Window in shower:** From Lumicor

clean-lined calm

UNIQUE ISLAND LAVATORY SOLVES A SPACE CHALLENGE

WISH LIST

- His-and-her closets and vanities
- One large room from a warren of small spaces
- Good, accessible storage

After raising three sons, an empty-nester couple was ready to focus on remodeling and decorating their contemporary-style home in the Northwest, which they had constructed 30 years prior. The upper-level bedroom and bathroom were redesigned with a slight Asian influence—but not so drastically that it wouldn't look appropriate in their angled, wood home. "Northwest architecture lends itself to that style, but we didn't want to overdo it," says Sandra Gjesdahl, co-owner, with her husband, Scott, of Bristol Design & Construction,

which relid the bathroom and bedroom as well as several first-floor public spaces.

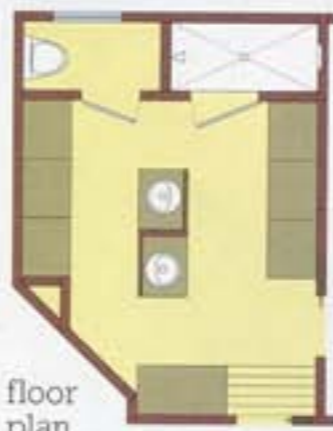
The couple's first order of business was perhaps the hardest: to eliminate the small rooms that made up the master bathroom in order to gain one interflowing space. Then Gjesdahl had to fit in everything the couple wanted, including his-and-her vanities, a two-person shower, a toilet cubicle, separate closets and a freestanding chest of drawers they would share. The solution? A clever center island akin to one in a kitchen, but here with two sinks, mirrors mounted so they'd each face a wall of closets, and shelves in between the mirrors.

The countertop on the shared vanity is a rich Costa Esmeralda granite, the color of which fits the home's setting. Closets resemble Shoji screens, but instead of impractical parchment paper for panels, they have more durable, water-resistant Fiberglas insets. The choice of wood was also critical to fashion the warm, rich aesthetic. The designers decided on Sapele, a native African wood that's similar to dark cherry or mahogany but has a richer, golden undertone; they used an accent of Wenge. (The same woods were used for cabinetry in the adjoining master bedroom.) The room's beige limestone flooring was accented with a few strategically placed green glass tiles, which were also used in the shower. Because light needed to be brought in, the designers developed several methods: A track with suspended pendants adds artificial light stylishly; a window in the shower was constructed from Lumicor, a recycled resin, which allows in natural light; reeded glass on the shower and toilet cubicle doors furthers the room's openness and light feeling; and a skylight was constructed near the center of the room.

A central vanity has his-and-her sinks laid out in a modified "2" pattern that gives privacy and storage to each.

ABOVE FAR LEFT: Shower and toilet rooms are concealed behind tall reeded-glass doors.

ABOVE LEFT: Rich Sapele, a wood similar to cherry, meets warm limestone floors.



floor plan

